

All Specifications, designs, layouts are subject to change. Accessories shown such as furniture, cabinets, electrical appliances, lighting fixtures, paintings, wall and floor finishes etc. are given by conceptual and not a legal offering. © SVPG - 10764. So. Approximate. Same and Conditions Apply.



Powered by CAD ADVERTISING - 88602122, 87119277



The **Imperial**
Gateway of Lifestyle

Corporate Office : 17, Kiran Enclave, Near Samrat Hotel, Main G.T. Road, Ghaziabad (U.P.)

Mob.: 8010 056056, www.svpgroup.in

Site Office : Opp. Tata Motors, Basant Road, Nehru Nagar, Ghaziabad (U.P.)

Welcome to your
imperial ambience

...and discover the finest residences in the heart of
Ghaziabad-Nehru Nagar. Pick your providence from an
exclusive collection of the most discernible spaces. Each
address is enviable, unique and rare, meant only for a
select few. Like you.

The Imperial
Gateway of Lifestyle



The Imperial
Gateway of Lifestyle



Living Room

Step in to a province of
infinite privacy

...a sanctuary that's very much private and not anonymous. Planned with detailing, it offers maximum space, more natural light and music, and a large canvas called sky to play with twinkling stars, right from your balcony. It has taken care of everything related to you, all while celebrating who you are.



Master Bedroom

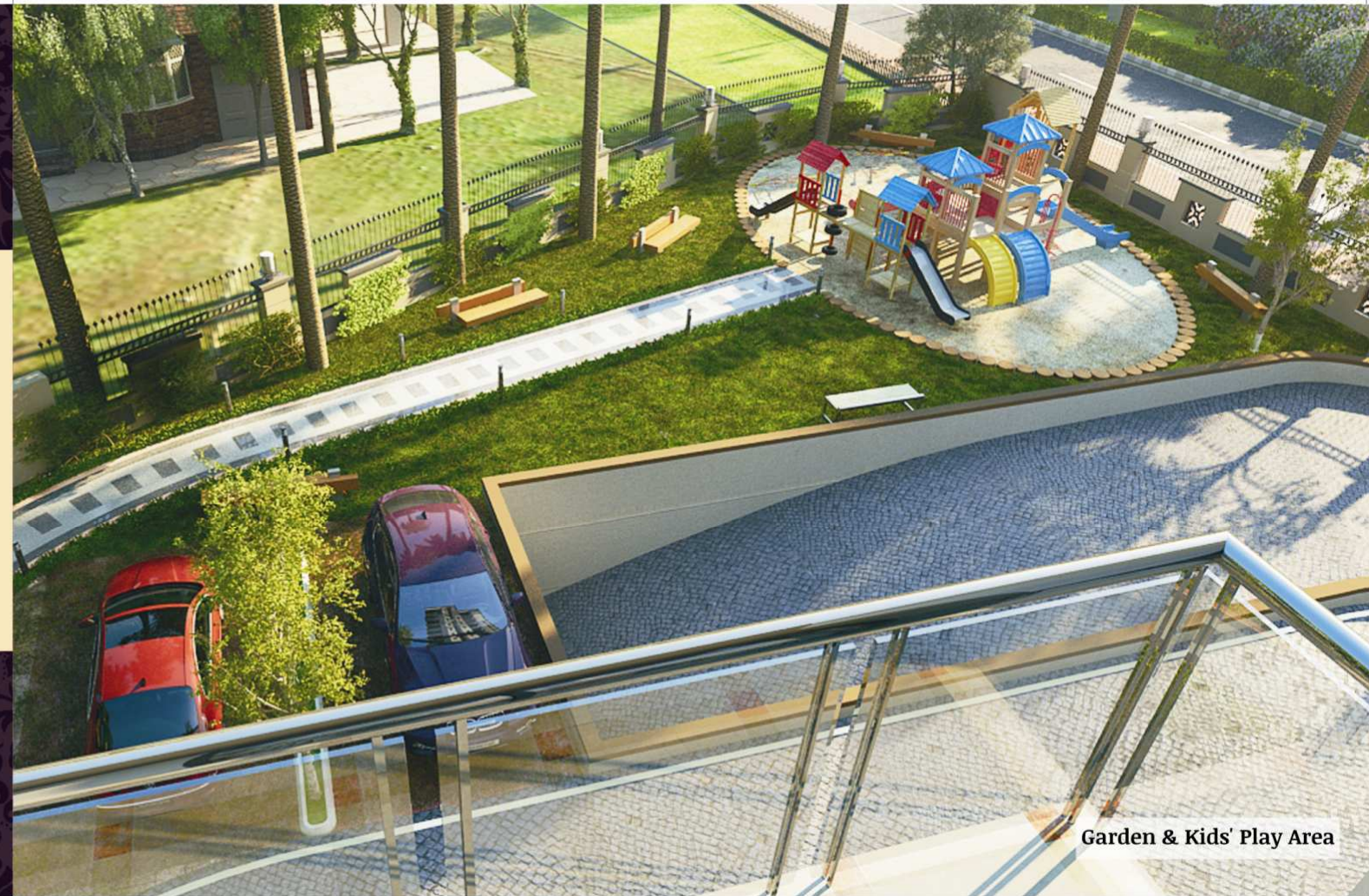
The Imperial
Gateway of Lifestyle



Roof-top Garden

Walk the green carpet
of boundless *calm*

... and get greeted by a pristine environment. Don't be surprised if you're mesmerized by the aura of freshness, lighting and the vast expanse. The Roof-Top Garden, decorated with flower beds and imported grass is all gardeners' delight and makes you feel extremely special all while sitting calm and knowing yourself better.



Garden & Kids' Play Area

The Imperial
Gateway of Lifestyle



Air-conditioned Gymnasium

Plunge into
the activities
of royal *indulgence*

...and find a way to remain healthy. With so many activities to get involved with you experiences a lifestyle that's not far behind of a king's. Sweat out the extra calories at the ultra-modern gym or take your family/ friend to the Roof Top cafeteria to spend some private moments. Be assured, whatever you'll do, it'll be beyond pleasure.



Roof-top Gym

The Imperial



Gateway of Lifestyle

Features that give you an edge

World-class Infrastructure:

reputed Schools, Hospitals and Malls are at close proximity

Congestion-free Connectivity:

two National Highways -NH-24 and NH-58 are at distinct visibility

Hassle-free Transportation:

easy access to Buses, Taxi and 3-wheelers; Proposed Metro station nearby

1. Roof Top Garden.
2. Roof Top Cafeteria.
3. Open Air Amphitheater.
4. Roof top Gym.
5. Two Tier Security Surveillance
6. Seperate waiting lobby
7. Swings, Mounds, Wooden Paragola.



Be in an abode of endless

Advantage

...and enjoy every bit of life. The strategic location of your address combined with unmatched facilities within the premise makes the place a heaven on this part of the soil. Peaceful yet fun-filled, idyllic yet comfortable, these 72 affluent apartments, consisting of 3/ 4 bedroom units are most treasured addresses. Own one to know how much it boosts one's stature and identity.



Imperial-4

3BHK
+2 Toilet
Super Area: 1545 sq.ft.



Imperial-2 & 5

3BHK
+2 Toilet+Store
Super Area: 1660 sq.ft.



Imperial-3

3BHK
+3 Toilet
Super Area: 1675 sq.ft.



Imperial-6

4BHK
+3 Toilet
Super Area: 2025 sq.ft.



Imperial-1

4BHK
+3 Toilet+Pooja Room
+ Entrance Lobby
Super Area: 2310 sq.ft.



Unit Plans



LOCATION MAP
(MAP IS NOT TO SCALE)



The Imperial

- is at a distinct proximity to GT Road and NH-24 & NH-58.
- is in the heart of Ghaziabad, being located at Nehru Nagar.
- is encompassed by posh colonies - Kavi Nagar, RDC, Raj Nagar and Patel Nagar
- is well accessed to quality markets - Navyug, Maliwara and Gandhi Nagar

The Imperial
Gateway of Lifestyle

Specifications

STRUCTURE

Eco friendly earthquake resistant RCC framed structure designed by highly experienced engineers, structure certified by IIT or similar institution. High quality construction material to be used.

FLOORING

- Wooden Flooring in master bedroom
- Vitrified tiles in living room, bedrooms & kitchen
- Anti-skid tiles in all balconies
- Designer marble flooring in common area & staircase

DOORS

- Main door entry - flush door with veneer finish
- External doors/windows-UPVC with clear glass and wire mesh.
- Internal doors - All Flush Doors

WOOD WORK

- Wooden wardrobes in all bedrooms.

KITCHEN

- Double bowl sink in 3BHK and 4BHK
- Kitchen counter with granite top
- Complete modular wood work in kitchen

WALLS

- Plastic emulsion paint on POP punning
- Ceiling - plastic emulsion paint on POP punning

ELECTRICAL WORK/FIXTURE

- Electrical work with copper wires in concealed PVC conduits
- Provision shall be made for sufficient lighting and power point fitting & sockets
- Telephone and TV point in bedrooms with switches
- Provision of split AC

EXTERNAL FINISHING

- Weather proof attractive modern finishing

SANITARY WARE

- Wall mounted W.C. in all toilets
- W.B. with counter
- Glass Cubical in Master Bedroom

BALCONY

- SS railing with Toughened glass



Building the foundation of *Trust*

SVP Group is a company that searches for soul in every project it develops. Because it believes, a humanly touch to structures brings calm, joy and contentment to the owners. The group ventured into real estate with a mission - to provide world-class residential and commercial structures to the Ghaziabad city. Today, its presence is visible in Indirapuram, Raj Nagar Extension, Mohan Nagar, Kaushambi and NH 24 but in near future it's going to explore more areas.

SVP Group's every project revolves around better planning, innovative designs and latest technology to stay abreast with the current market scenario. Backed by a team of over 700 trained employees, the group upholds its business vision while maintaining a transparent track record. The group understands the value of every single penny that an investor risks, thus always emphasizes on the project's location and the price tag. The group ensures that there's enough for everybody in the palate and earns good returns.



OUR PROJECTS

